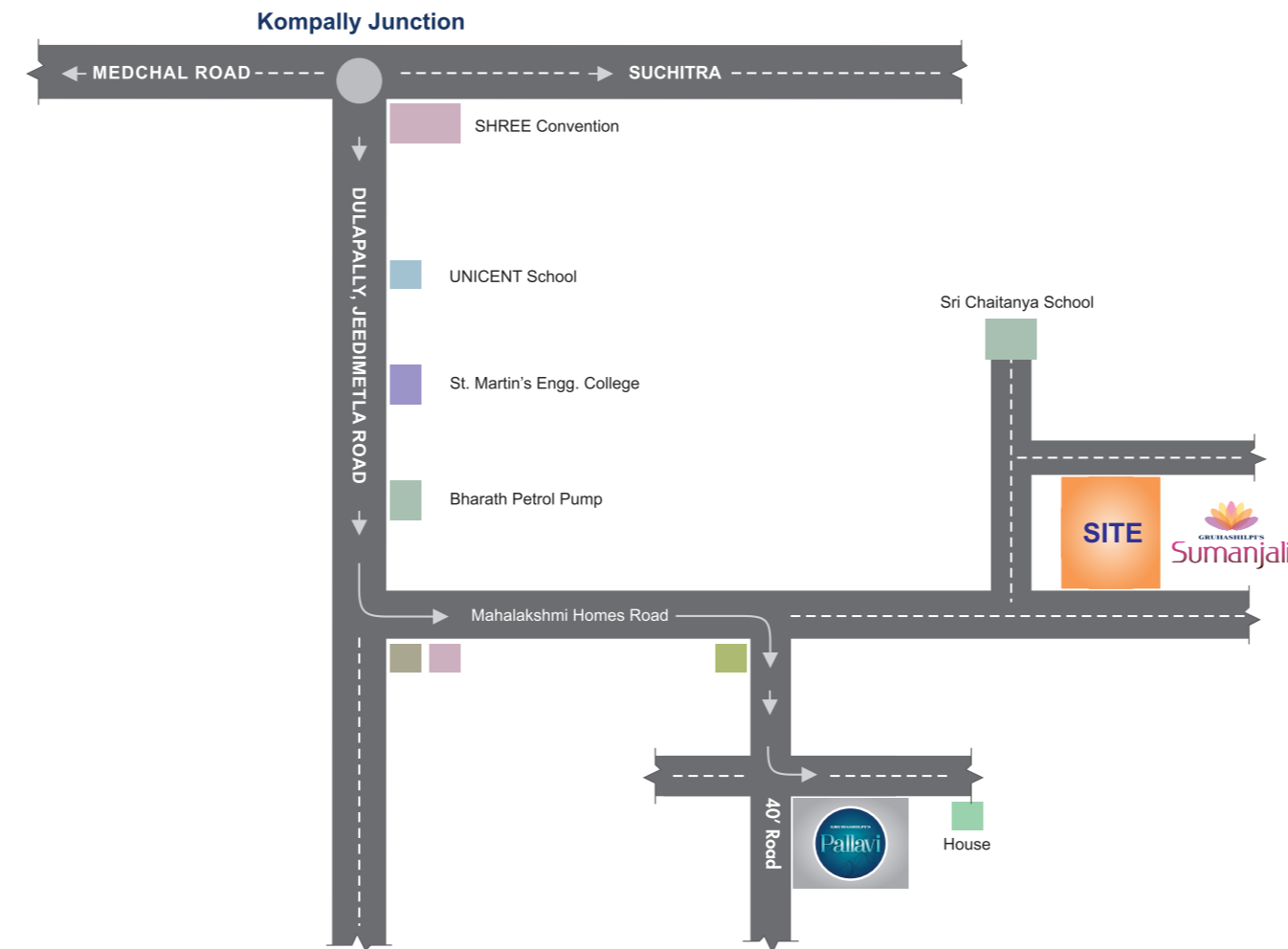


Specifications

- Structure** : R.C.C. framed structure.
- Superstructure** : 6" and 4" solid cement blocks with cement mortar.
- Plastering** : Internal cement plaster with Lappam finish. External double coat sponge finish cement mortar.
- Main Door** : Teak wood frame with teak wood shutter.
- Other Doors** : Salwood frames with flush door shutters.
- Windows** : UPVC Windows.
- Flooring** : 2'X2' vitrified tiles for Drawing, Living, Dining, Bedrooms and Balconies. Anti-skid ceramic tiles for Bathrooms, Kitchen and Utility.
- Toilets** : CPVC piping with good quality fittings, ceramic tiles flooring, dado 5' height with glazed tiles.
- Kitchen** : Granite platform with stainless steel sink 2' height dado with glazed tiles.
- Painting** : Main door with wood polish, internal doors with enamel paint. Internal walls with oil bound distemper paint. External walls with quality external paint.
- Electricals** : Adequate power and lighting points with concealed copper wiring with modular switches.
- Lift** : One six passenger capacity lift.
- Generator** : Generator for Lift & Common Area.

LOCATION MAP



Architects
Enjamuri Associates

Structural Engineers
Consolidated Concept Consultants

Legal Advisor
C. Prabhakar Rao



GRUHASHILPI CONSTRUCTIONS PVT. LTD.
3-5-873, Flat No. DG-3, Ground Floor, D-Block, Mathrusree Apartments, Hyderguda, Hyderabad - 500 029.
Phone: 040 - 6625 0775, 040 - 2322 0775. e-mail: gruhashilpiconstructions@gmail.com
web: www.gruhashilpiconstructions.com
Contact: 91210 19391

Note : This brochure is a conceptual presentation of the project and not a legal offering.
The promoters reserve the right to alter and make changes in elevation, specifications and plans as deemed fit.



GRUHASHILPI'S
Sumanjali
Live in Harmony!

vereenmedia.com



GRUHASHILPI
CONSTRUCTIONS

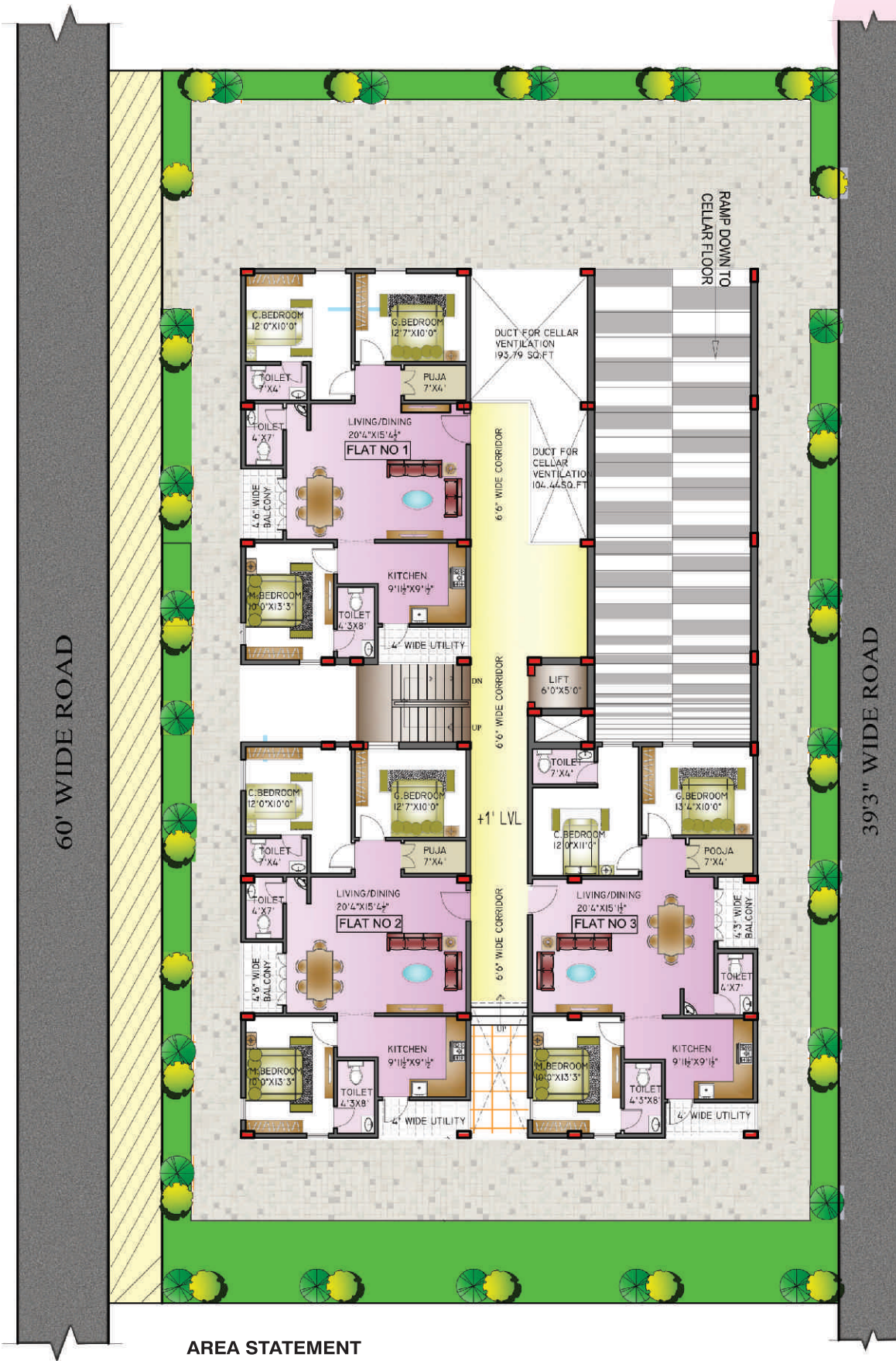
Gruhashilpi Constructions has introduced yet another line of luxury abodes, Sumanjali. For potential homeowners who crave harmony amidst the hustle and bustle of city life, Sumanjali offers the perfect escape. Equipped with modern amenities spread over a gorgeous landscape, here, every home is made with love, care and attention.

Come home to Sumanjali, where living in harmony comes naturally.

GRUHASHILPI'S
Sumanjali
Live in Harmony!



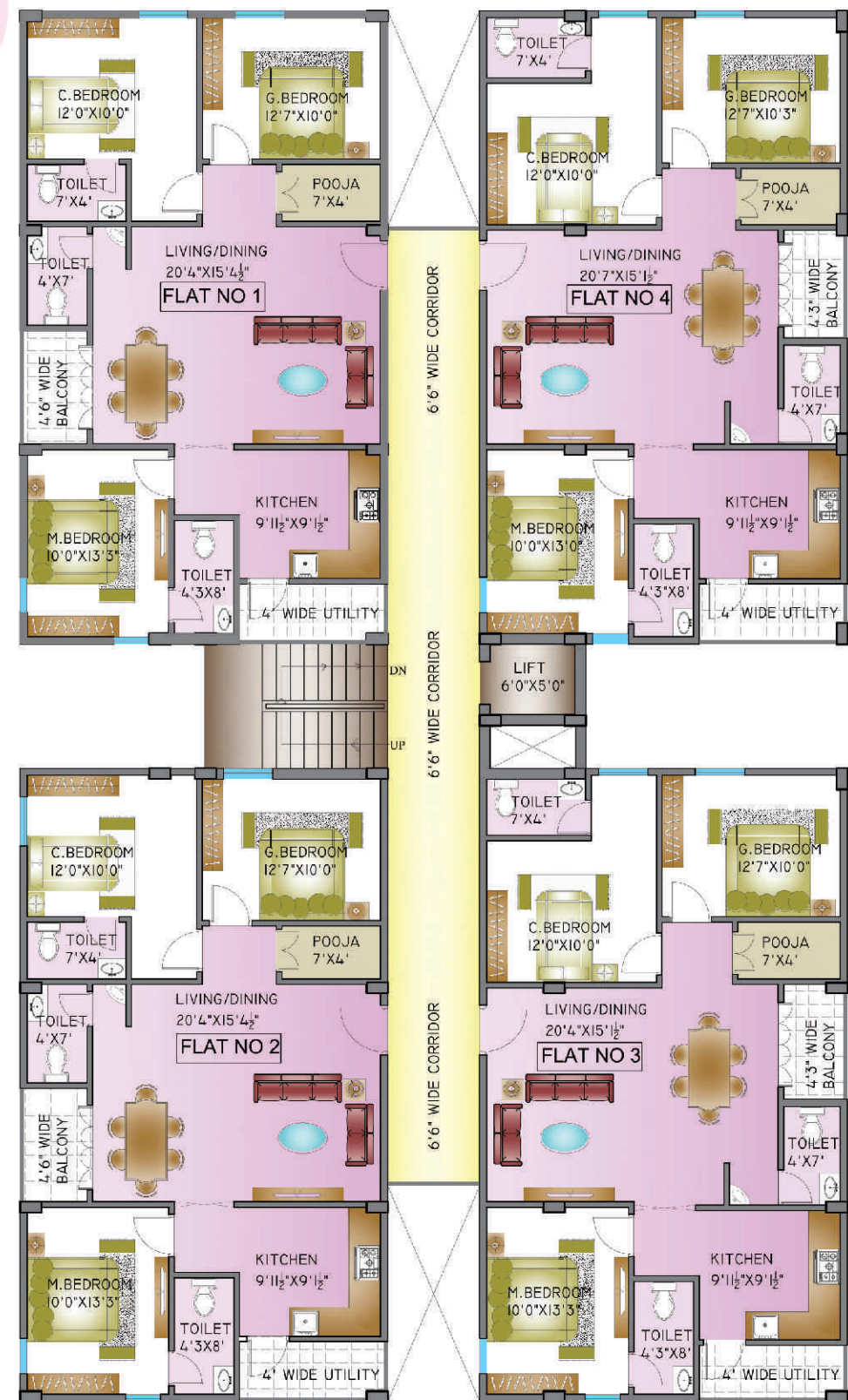
Ground Floor Plan



AREA STATEMENT

Flat No.	Carpet Area in Sq.Ft	Balcony Area in Sq.Ft	Utility Area in Sq.Ft	Saleable Area in Sq.Ft
Flat-1	962	38	45	1453
Flat-2	962	38	45	1453
Flat-3	962	38	45	1453

First Floor to Fifth Floor



AREA STATEMENT

Flat No.	Carpet Area in Sq.Ft	Balcony Area in Sq.Ft	Utility Area in Sq.Ft	Saleable Area in Sq.Ft
Flat-1	962	38	45	1453
Flat-2	962	38	45	1453
Flat-3	962	38	45	1453
Flat-4	962	38	45	1453

